

UQA-50001-GOBO

Quantum 1 Small GOBO Floodlight



44w LED 2508 Lumens
IP66 • Suitable For Wet Locations
IK08 • Impact Resistant (Vandal Resistant)
Weight 14 lbs

Construction

Aluminum
Less than 0.1% copper content - Marine Grade 6060 extruded & LM6 Aluminum High Pressure die casting provides excellent mechanical strength, clean detailed product lines and excellent heat dissipation.

Pre paint
8 step degrease and phosphate process that includes deoxidizing and etching as well as a zinc and nickel phosphate process before product painting.

Memory Retentive -Silicon Gasket
Provided with special injection molded "fit for purpose" long life high temperature memory retentive silicon gaskets. Maintains the gaskets exact profile and seal over years of use and compression.

Thermal management
LM6 Aluminum is used for its excellent mechanical strength and thermal dissipation properties in low and high ambient temperatures. The superior thermal heat sink design by Ligman used in conjunction with the driver, controls thermals below critical temperature range to ensure maximum luminous flux output, as well as providing long LED service life and ensuring less than 10% lumen depreciation at 50,000 hours.

Surge Suppression
Standard 10kv surge suppressor provided with all fixtures.

BUG Rating
B3 - U0 - G0

EPA
0.52

Finishing.
All Ligman products go through an extensive finishing process that includes fettling to improve paint adherence.

Paint
UV Stabilized 4.9Mil thick powder coat paint and baked at 200 Deg C. This process ensures that Ligman products can withstand harsh environments. Rated for use in natatoriums.

Inspired by Nature Finishes
The Inspired by nature Finishing is a unique system of decorative powder coating. Our metal decoration process can easily transform the appearance of metal or aluminum product into a wood grain finish.

This patented technology enables the simulation of wood grain, and even marble or granite finish through the use of decorative powder coating.

The wood grain finish is so realistic that it's almost undistinguishable from real wood, even from a close visual inspection. The system of coating permeates the entire thickness of the coat and as a result, the coating cannot be removed by normal rubbing, chipping, or scratching.

The Coating Process
After pre-treatment the prepared parts are powder coated with a specially formulated polyurethane powder. This powder provides protection against wear, abrasion, impact and corrosion and acts as the relief base color for the finalized metal decoration.

The component is then wrapped with a sheet of non-porous film with the selected decoration pattern printed on it using special high temperature inks.

This printed film transfer is vacuum-sealed to the surface for a complete thermo print and then transferred into a customized oven. The oven transforms the ink into different forms within the paint layer before it becomes solid. Finally, the film is removed, and a vivid timber look on aluminum remains.

Wood grain coating can create beautiful wood-looking products of any sort. There are over 300 combinations of designs currently in use. Wood grains can be made with different colors, designs, etc.

Our powder coatings are certified for indoor and outdoor applications and are backed by a comprehensive warranty. These coatings rise to the highest conceivable standard of performance excellence and design innovation.

Added Benefits
• Resistance to salt-acid room, accelerated aging
• Boiling water, lime and condensed water resistant
• Anti-Graffiti, Anti-Slip, Anti-Microbial, Anti-Scratch
• Super durable (UV resistant)
• TGIC free (non-toxic)

Hardware
Provided Hardware is Marine grade 316 Stainless steel.

Anti Seize Screw Holes
Tapped holes are infused with a special anti seize compound designed to prevent seizure of threaded connections, due to electrolysis from heat, corrosive atmospheres and moisture.

Crystal Clear Low Iron Glass Lens
Provided with tempered, impact resistant crystal clear low iron glass ensuring no green glass tinge.

Optics & LED
Precise optic design provides exceptional light control and precise distribution of light.
LED CRI > 80

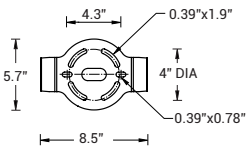
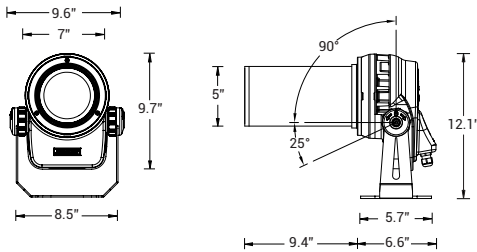
Lumen - Maintenance Life
L80 /B10 at 50,000 hours (This means that at least 90% of the LED still achieve 80% of their original flux)

Compact and powerful Gobo projector to match the entire Quantum family of fixtures and an added tool for clusters, columns and structures. Optional focal lengths, able to take both metal and glass size-M gobos and IP66 protection.

Quantum small and medium LED projector range with a modern and smart design. The high pressure die-cast housings have integrated heat sinks, as well as an internal waterproof control gear housing compartment. The mounting arm is attached to a ratcheting tilting adjustment that is lockable once the desired aiming position has been achieved. This mechanism allows for small incremental adjustments for precision aiming.

This fixture has been designed around powerful high performance LEDs and precision optics so that the luminaire can be used to illuminate various applications from building facades to high multi story surfaces and accents.

Available in Narrow beam distribution. Static white for Color temperature 3000K and 4000K. Single cable gland entry for wiring is standard. Consult factory for available configurations.



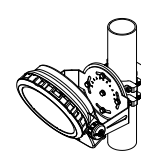
Mounting Detail



Gobo Size



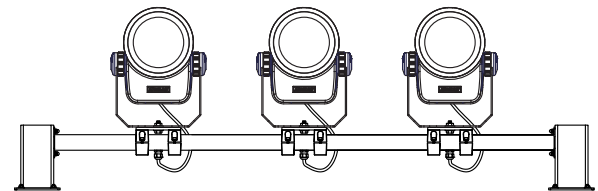
Additional Options (Consult Factory For Pricing)



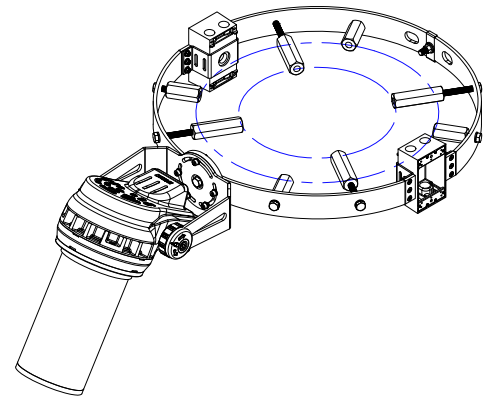
PC-X[™]
Pole Clamp 4-5.5"



PKM
Pedestal Knuckle
Mount



RM
Rail Mount Option
(Number of Floods May Be Specified)



Custom Quantum Treestrap
[Contact Factory for Details and Pricing]

UQA-50001-GOBO

Quantum 1 Small GOBO Floodlight

| | | | |
|----------------|----------------------|-------------|----------------------|
| PROJECT | <input type="text"/> | DATE | <input type="text"/> |
|----------------|----------------------|-------------|----------------------|

| | | | | | |
|-----------------|----------------------|-------------|----------------------|-------------|----------------------|
| QUANTITY | <input type="text"/> | TYPE | <input type="text"/> | NOTE | <input type="text"/> |
|-----------------|----------------------|-------------|----------------------|-------------|----------------------|

ORDERING EXAMPLE || UQA - 50001 - 44w LED - G - W30 - 02 - 120/277v

| | | | | | |
|------------------|------------------------|----------------------|----------------------------|---|-----------------------------|
| UQA-50001 | <input type="text"/> | <input type="text"/> | <input type="text"/> | <input type="text"/> | <input type="text"/> |
| | LAMP | BEAM | LED COLOR | FINISH COLOR | VOLTAGE |
| | 44w LED 2508 Lumens | G - G Beam 17° | W30 - 3000K W40 - 4000K | 01 - BLACK RAL 9011 02 - DARK GREY RAL 7043 03 - WHITE RAL 9003 04 - METALLIC SILVER RAL 9006 05 - MATTE SILVER RAL 9006 06 - LIGMAN BRONZE 07 - CUSTOM RAL | 120/277v Other - Specify |

| | | |
|----------------------|----------------------|----------------------|
| <input type="text"/> | <input type="text"/> | <input type="text"/> |
|----------------------|----------------------|----------------------|

ADDITIONAL OPTIONS

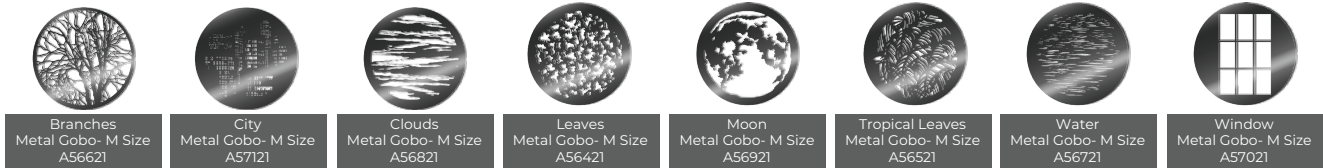
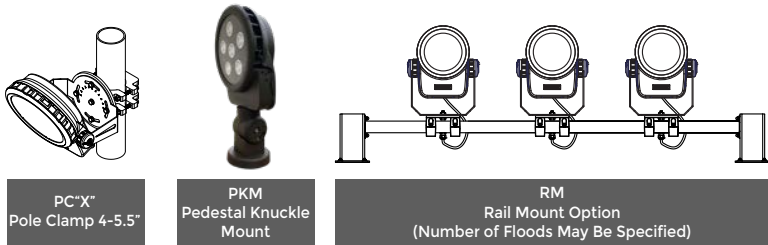
- F - Frosted Lens
- DIM - 0-10v Dimming
- NAT - Natatorium Rated
- PKM - Pedestal Knuckle Mount
- RM - Rail Mounted
(Specify # of Floods)

- POLE CLAMPS**
- PC4 - Pole Clamp 4" Dia
 - PC45 - Pole Clamp 4.5" Dia
 - PC5 - Pole Clamp 5" Dia
 - PC55 - Pole Clamp 5.5" Dia

INSPIRED BY NATURE FINISHES

- SW01 - OAK FINISH
- SW02 - WALNUT FINISH
- SW03 - PINE FINISH
- DF - DOUGLAS FIR FINISH
- CW - CHERRY WOOD FINISH
- NW - NATIONAL WALNUT FINISH
- SU01 - CONCRETE FINISH
- SU02 - SOFTSCAPE FINISH
- SU03 - STONE FINISH
- SU04 - CORTEN FINISH

THERE IS AN ADDITIONAL COST FOR THESE FINISHES



Custom laser cut GOBOs and glass colored GOBOs also available. Consult factory for more information



Quantum Product Family



- UQA-50001-42w-3634lm
- UQA-50003-30w-2790lm
- UQA-50004-33w RGBW-1432lm



- UQA-50011-83w-8132lm
- UQA-50013-76w-8899lm
- UQA-50015-77w RGBW-3580lm



- UQA-50021-269w-27436lm
- UQA-50022-191w RGBW-12213lm



- UQA-21001-3x42w-3x3634lm
- UQA-21003-3x32w-3x3250lm
- UQA-21004-3x33w RGBW-3x1185lm
- UQA-21011-6x42w-6x3634lm
- UQA-21013-6x32w-6x3250lm
- UQA-21014-6x33w RGBW-6x1185lm



- UQA-21021-104w-10611lm
- UQA-21023-76w-7175lm
- UQA-21024-84w-8031lm
- UQA-21031-2x104w-2x10611lm
- UQA-21033-2x76w-2x7175lm
- UQA-21034-2x84w-2x8031lm



- UQA-21025-77w-4296lm
- UQA-21035-2x77w-2x4296lm

Narrow Beam Projection



Surface 9.8'
From Quantum



Surface 13.1'
From Quantum



Surface 16.4'
From Quantum



Surface 19.6'
From Quantum



Surface 23'
From Quantum



Surface 26.2'
From Quantum



Surface 32.8'
From Quantum



Surface 49.2'
From Quantum