

USM-21121

Smith Light Column



54w LED
7,626 Lumens

IP65
Suitable for wet locations

IK08
Impact Resistant [Vandal Resistant]

EPA: 0.605 m² → 6.51 ft²

Weight 45.2 lbs

Pole Included

Construction

Aluminum
Less than 0.1% copper content – Marine Grade 6060 extruded & LM6 Aluminum High Pressure die casting provides excellent mechanical strength, clean detailed product lines and excellent heat dissipation.

Pre paint
8 step degrease and phosphate process that includes deoxidizing and etching as well as a zinc and nickel phosphate process before product painting.

Memory Retentive -Silicon Gasket
Provided with special injection molded "fit for purpose" long life high temperature memory retentive silicon gaskets. Maintains the gaskets exact profile and seal over years of use and compression.

Thermal management
LM6 Aluminum is used for its excellent mechanical strength and thermal dissipation properties in low and high ambient temperatures. The superior thermal heat sink design by Ligman used in conjunction with the driver, controls thermals below critical temperature range to ensure maximum luminous flux output, as well as providing long LED service life and ensuring less than 10% lumen depreciation at 50,000 hours.

Surge Suppression
Standard 10kv surge suppressor provided with all fixtures.

BUG Rating
B1 - U5 - G2

Finishing
All Ligman products go through an extensive finishing process that includes fettling to improve paint adherence.

Paint
UV Stabilized 4.9Mil thick powder coat paint and baked at 200 Deg C. This process ensures that Ligman products can withstand harsh environments. Rated for use in natatoriums.

MicroPRIM Finishes

MicroPRIM is Ligman's trade marked decorative powder coating technology that permanently infuses colors, patterns, or imagery directly into the surface of luminaires and poles while providing protections that standard powder coating does not offer.

MicroPRIM finishes include nature-inspired wood grains and stone aesthetics, material-inspired finishes such as brushed metal, concrete, and carbon fiber. Solid colors in Ligman standard colors, as well as any RAL or Pantone color, Decorative patterns, custom imagery and more.

Coating and Infusion Process

Metal components are pre-treated and powder coated with a proprietary polyurethane-based coating engineered for outdoor architectural use. Decorative patterns or imagery are then permanently infused into the cured powder coat through a heat-based process, creating a durable, integrated finish.

Performance and Validation

MicroPRIM finishes are suitable for indoor and outdoor applications and meet AAMA2605 architectural coating requirements. Performance is validated through laboratory and real-world testing to ASTM standards for UV exposure, adhesion, abrasion, impact, salt spray, chemical resistance, and graffiti resistance.

All MicroPRIM finishes are backed by Ligman's 10-year warranty.

Key Performance Attributes

- Anti-graffiti resistance
- UV and weather resistance
- Scratch and abrasion resistance
- Natatorium Rated for installation in corrosive environments

Hardware

Provided Hardware is Marine grade 316 Stainless steel.

Anti Seize Screw Holes

Tapped holes are infused with a special anti seize compound designed to prevent seizure of threaded connections, due to electrolysis from heat, corrosive atmospheres and moisture.

High Impact Acrylic Lens

Manufactured with Ultra High Impact, Naturally UV Stabilized Injection Molded Acrylic.

Optics & LED

Precise optic design provides exceptional light control and precise distribution of light.
LED CRI > 80

Lumen - Maintenance Life

L80 /B10 at 50,000 hours (This means that at least 90% of the LED still achieve 80% of their original flux)

Straight and clean round column. Smooth lines complimented with a smooth lighting effect from the opal vertical diffuser.

Smith is an elegant and robust light column designed to complement both modern and classic architecture. Ideal for creating visual guidance with exceptional visual comfort, its sleek minimalist form delivers distinctive nighttime lighting effects and a refined decorative presence during the day. Smith is well-suited for pedestrian precincts, building perimeters, shopping centers, plazas, squares, and parks.

The luminaire is equipped with an ultra-high-impact, UV-stabilized acrylic lens engineered to provide excellent low-glare vertical illumination.

The **Smith Column** comes standard with an innovative waterproof internal driver housing located at the top of the pole, preventing water and dust intrusion into the electrical components. Each unit is factory-wired with a power cord and waterproof gland running from the driver enclosure to the handhole, ensuring fast, reliable, and trouble-free installation.

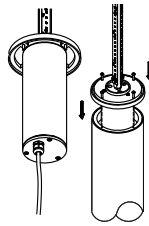
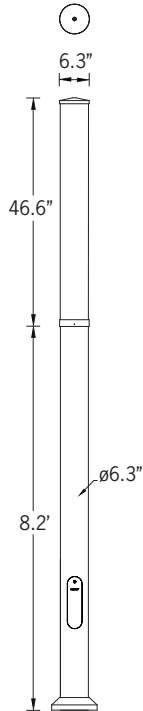
Custom pole heights are available—please specify.

A flush-mounted curved handhole cover, complete with gasket.

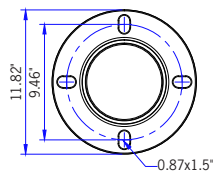
Standard color temperatures include **2700K, 3000K, 3500K, and 4000K.**

Custom wattages can be provided to meet specific project requirements (please specify total watts per fixture).

This product is supplied complete with **anchor bolts** and a **laser-cut steel anchor bolt template.**



Standard Internal Waterproof Driver Housing



Mounting Detail

Additional Options (Consult Factory For Pricing)



A20691
Root Mount Kit



A20131
Perforated Shield
[Custom Laser Cutting and Powder Coating Options]



PROJECT		DATE	
---------	--	------	--

QUANTITY		TYPE		NOTE	
----------	--	------	--	------	--

ORDERING EXAMPLE || USM - 21121 - 54w - W30 - 02 - 120/277v - Options

USM-21121					
LAMP	54w LED 7,626 Lumens	LED COLOR	W27 - 2700K W30 - 3000K W35 - 3500K W40 - 4000K	FINISH COLOR	01 - BLACK RAL 9011 02 - DARK GREY RAL 7043 03 - WHITE RAL 9003 04 - METALLIC SILVER RAL 9006 05 - MATTE SILVER RAL 9006 06 - LIGMAN BRONZE 07 - CUSTOM RAL
VOLTAGE	120/277v				

--	--	--

ADDITIONAL OPTIONS

- | | |
|-------------------------------------|----------------------------|
| NAT - Natatorium Rated | A20691 - Root Mount Kit |
| DIM - 0-10v Dimming | A20131 - Perforated Shield |
| HGT - Custom Height (Specify) | GFCI - GFCI Box |
| REMG - Remote Emergency Inverter | |
| CSA - CSA Rated Approved for Canada | |

More Custom Finishes Available Upon Request

Consult factory for pricing and lead times

MicroPRIM FINISHES

- SW01 - OAK FINISH
- SW02 - WALNUT FINISH
- SW03- PINE FINISH
- DF - DOUGLAS FIR FINISH
- CW - CHERRY WOOD FINISH
- NW - NATIONAL WALNUT FINISH
- SU01 - CONCRETE FINISH
- SU02 - SOFTSCAPE FINISH
- SU03 - STONE FINISH
- SU04 - CORTEN FINISH
- CSM - Custom Image/Pattern

MicroPRIM FINISHES

- MP - MAPLE FINISH
- MHG - MAHOGANY FINISH
- BH - BEECH FINISH
- CN - CHESTNUT FINISH
- WMBL - WHITE MARBLE FINISH
- MBL - MARBLE FINISH
- GRNT - GRANITE FINISH
- BGD - BRUSHED GOLD FINISH
- BBRZ - BRUSHED BRONZE FINISH
- CAMO - CAMOUFLAGE FINISH

- MP01 - MicroPRIM RAL 9011 Black (Glossy)
- MP02 - MicroPRIM RAL 7043 Dark Grey (Glossy)
- MP03 - MicroPRIM RAL 9003 White (Glossy)
- MP04 - MicroPRIM RAL 9006 Metallic Silver (Glossy)
- MP05 - MicroPRIM RAL 9006 Matte Silver (Matte/Textured)
- MP06 - MicroPRIM Ligman Bronze (Glossy)
- MP07 - MicroPRIM Custom Color (Glossy)



MicroPRIM Finish



Smith Product Family



Smith 1

- USM-10693-33w-1644lm
- USM-10693-18w-760lm



Smith 2

- USM-21121-66w-3340lm [6.3"]



Smith 3

- USM-21031-58w-5172lm [8.8"]



Smith 5

- USM-10701-38w-4234lm



Smith 5

- USM-21141-76w-8468lm